

Rab's Country Lanes Gold Shootout

Saturday October 28, 2017

FINAL RESULTS

U12

Name	Game 1	Game 2	Game 3	Game 4	Total	Qualifying Round Place
William Kohnenkamp	158	147	126	196	627	1
Joseph Guarnieri	122	147	173	125	567	2
Brianna Mester	109	140	168	139	556	3
Isabella Fabozzi	98	87	97	111	393	4

Stepladder Finals

Brianna Mester def. Isabella Fabozzi 134 - 132
Joseph Guarnieri def. Brianna Mester 178 - 154
Joseph Guarnieri def. William Kohnenkamp 164 -143

U15

Name	Game 1	Game 2	Game 3	Game 4	Total	Qualifying Round Place
Daniel Convery	176	188	175	194	733	1
Brandon Leung	208	128	168	186	690	2
Maya Avilez	149	181	206	140	676	3
Nicholas Palmeri	134	145	137	202	618	4
Robert Piccolo	169	147	169	130	615	5
Frank Koppie	112	151	96	158	517	6
Cody Bass	135	87	117	130	469	7
Steven Souffrin	103	129	113	108	453	8

Stepladder Finals

Nicholas Palmeri def. Maya Avilez 164 - 159
Brandon Leung def. Nicholas Palmeri 213 - 194
Brandon Leung def. Daniel Convery 169 - 153

U20

Name	Game 1	Game 2	Game 3	Game 4	Total	Qualifying Round Place
Taylor Waglione	202	176	202	205	785	1
Harris Mirza	164	216	189	212	781	2
Jason Wichnovitz	223	188	162	187	760	3
Kenneth Courtney	180	162	219	163	724	4
William Courtney	187	181	175	168	711	5
Joseph Nadal	148	146	150	210	654	6
Jessica Fetik	158	142	150	175	625	7
Anthony Pizzirusso	149	165	159	138	611	8
Joe Narusen	134	115	181	153	583	9
Steven Pasquale	125	108	135	189	557	10
Daniel Block	130	138	156	112	536	11
Daniel Chapman	143	130	155	99	527	12
Anthony Derosa	109	108	149	131	497	13
Robert Pepe	130	106	121	122	479	14

Stepladder Finals

Jason Wichnovitz def. Kenneth Courtney 171 - 165
Jason Wichnovitz def. Harris Mirza 213 - 158
Taylor Waglione def. Jason Wichnovitz 182 - 155

U12 Final Results	Scholarship	U15 Final Results	Scholarship	U20 Final Results	Scholarship
Joseph Guarnieri *	\$ 75.00	Brandon Leung *	\$ 75.00	Taylor Waglione +	\$ 100.00
William Kohnenkamp		Daniel Convery	\$ 45.00	Jason Wichnovitz *	\$ 75.00
Brianna Mester		Nicholas Palmeri		Harris Mirza *	\$ 45.00
Isabella Fabozzi		Maya Avilez		Kenneth Courtney	\$ 25.00

* Qualified for 2018 Junior Gold Championships

+ Earned spot in previous event

LANE CONDITION: KEGEL Autobahn (42')



KEGEL NAVIGATION PATTERNS

SPORT SERIES



AUTOBAHN 2542

Using Kegel's reverse drop brush function, the amount of applied conditioner is increased in the midlane but less is at the end of the pattern.

This makes the Autobahn more about speed control and keeping your path straighter through the front part of the 'drive'; a term used for bowling lanes in the early 1900's.

On some 'drives', faster speeds may be best while other 'drives' may require a little less speed to navigate the corner without crashing through the breakpoint.

Latitude Ratio Coordinates

22' 2.5 to 1

40' 2.0 to 1

Longitude Ratio Coordinates

Outside Taper 4.6 to 1

Inside Taper 4.0 to 1

Pattern Distance

42 Feet

Pattern Volume

Forward 18.70 mL

Reverse 7.15 mL

Total 25.85 mL



KEGEL NAVIGATION PATTERNS

SPORT SERIES



AUTOBAHN 2542

Latitude Ratio Coordinates

22' 2.5 to 1
40' 2.0 to 1

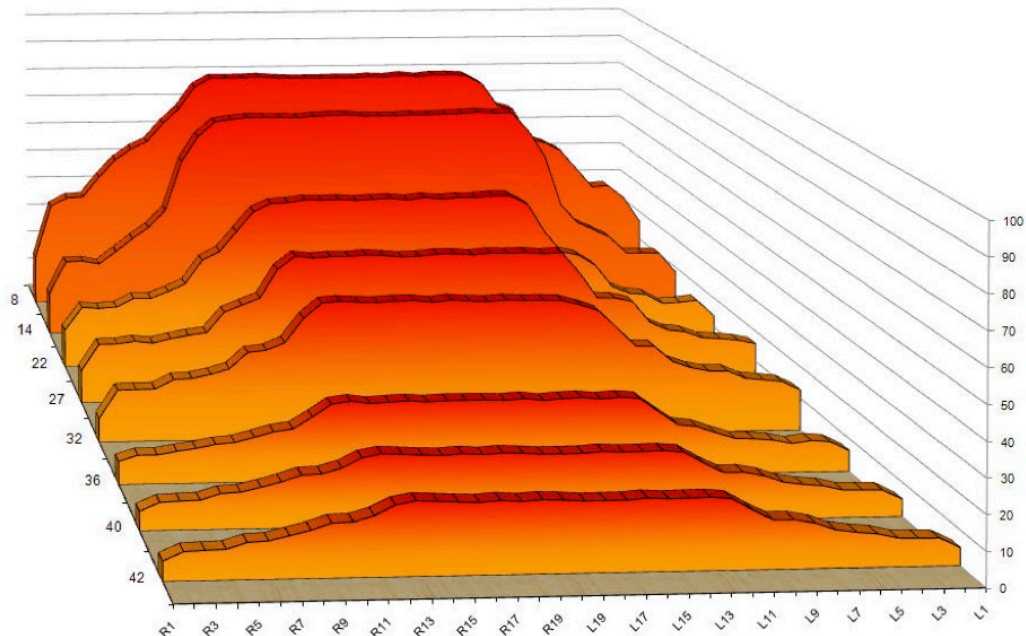
The 2D chart below was generated by Lane Monitor showing select tapes and ratios at key distances throughout the pattern. USBC Sport Bowling ratios are calculated at 22' and 2' before the end of the pattern. All Latitude Ratio Coordinates are calculated from these two distances.

Latitude ratios in the last half of the pattern can be an indicator of the difficulty of a pattern. Generally, the lower the ratios down lane, the more difficult the pattern.

Longitude Ratio Coordinates

Outside Taper 4.6 to 1
Inside Taper 4.0 to 1

The 2D chart also gives a visual of how the conditioner tapers off from the front to the end of the pattern. Because of the drop brush feature used in this pattern, there is a greater amount of taper at the end of the pattern.





KEGEL NAVIGATION PATTERNS

SPORT SERIES

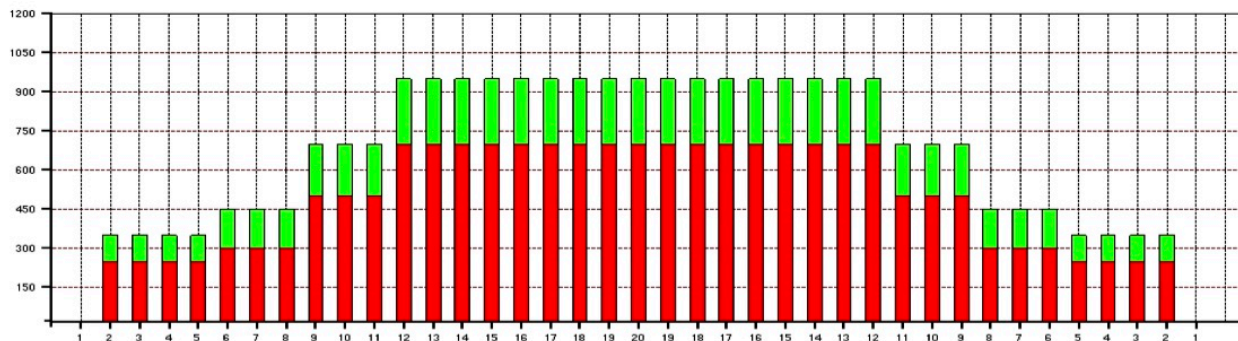
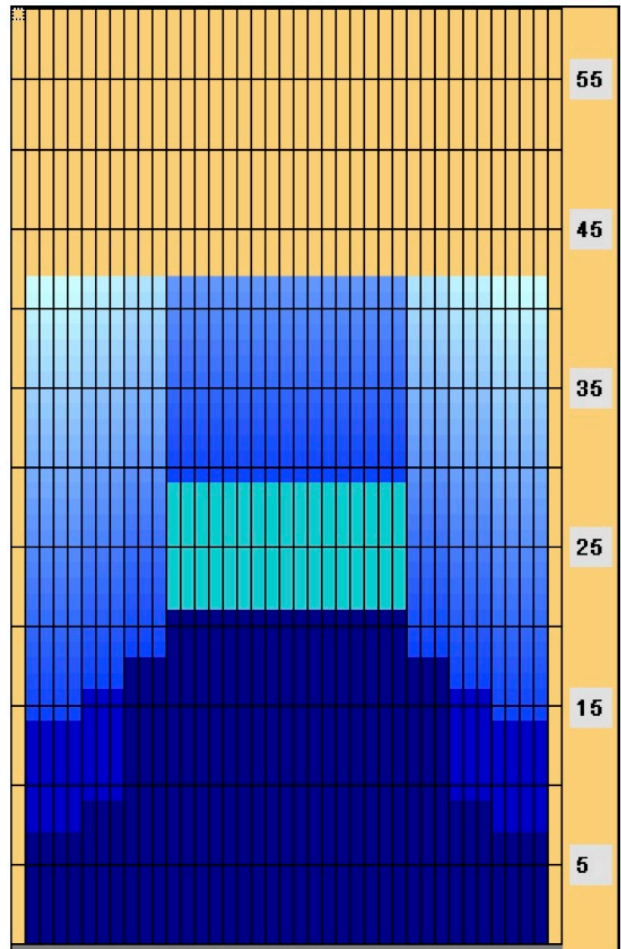


AUTOBAHN 2542

The charts on this page are generated by Kegel's KOSI software from the lane machine program sheet.

The **OVERHEAD CHART** on the right shows where the conditioner is applied on both the forward and reverse screens. The gradient area is a calculation of how the conditioner might bleed off the buffer brush.

The **COMPOSITE GRAPH** below shows the total amount of conditioner applied to every board. A good way to think about this graph is to envision all the conditioner on the lane being pushed back to the foul line. Once all the conditioner is stacked up, this is what it would look like.





KEGEL NAVIGATION PATTERNS

SPORT SERIES



AUTOBAHN 2542

Kegel Sanction Technology™ Lane Machine Settings

Oil per Board (Pump Setting): 50 µL

Pattern Distance: 42 feet

Reverse Drop Brush: 33'

Forward Settings										
Screen #	Left End of Stream	Right End of Stream	# Loads or Streams	Travel Speed (in/sec)	Beginning Distance of Load (feet)	Ending Distance of Load (feet)	# Boards Crossed per Load	Total Boards Crossed	Total Volume of Oil (µL)	
01F	2	2	5	14.00	0.00	7.90	37	185	9250	
02F	6	6	1	14.00	7.90	9.80	29	29	1450	
03F	9	9	2	14.00	9.80	13.70	23	46	2300	
04F	9	9	2	18.00	13.70	18.80	23	46	2300	
05F	12	12	4	18.00	18.80	29.00	17	68	3400	
06F	2	2	0	18.00	29.00	34.00	0	0	0	
07F	2	2	0	22.00	34.00	42.00	0	0	0	
08F										
09F										
Forward Buff Screens: 2			Forward # Boards Crossed Volume mL					374	18.70	
Reverse Settings										
Screen #	Left End of Stream	Right End of Stream	# Loads or Streams	Travel Speed (in/sec)	Beginning Distance of Load (feet)	Ending Distance of Load (feet)	# Boards Crossed per Load	Total Boards Crossed	Total Volume of Oil (µL)	
01R	2	2	0	30.00		32.00	0	0	0	
02R	12	12	1	18.00	21.00	18.50	17	17	850	
03R	9	9	1	18.00	18.50	16.00	23	23	1150	
04R	6	6	1	18.00	16.00	13.50	29	29	1450	
05R	2	2	2	18.00	13.50	8.40	37	74	3700	
06R	2	2	0	14.00	8.40	0.00	0	0	0	
07R										
08R										
09R										
Reverse # Boards Crossed Volume mL								143	7.15	
Forward plus Reverse Boards Crossed Volume mL								517	25.85	

